



- Anthem thermostatic valves and controls feature advanced outlet regulation for independent access to each shower component.
- Thermostatic technology allows to maintain a consistent temperature control for the ultimate shower experience.
- High-flow thermostatic mixing valve.
- G3/4" female inlets and G1/2" female outlets.
- Anthem control panel includes a temperature control knob with integrated adjustable high-temperature limit stop and shower outlet on/off buttons that pop out for the adjustment of water flow.
- Low profile design with easy-to-clean water resistant casing.
- Anthem control panel trim is available in 4 colour finishes.
- Suitable for mains pressure.

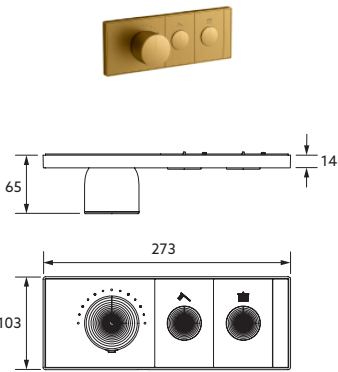
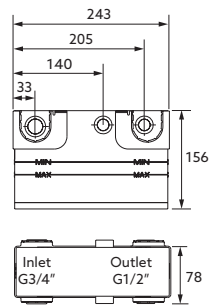
**Anthem Recessed Mech TH Control - 2OT**

Polish Chrome - 26346T-9-CP  
 Brushed Nickel - 26346T-9-BN  
 Brushed Brass - 26346T-9-2MB  
 Matte Black - 26346T-9-BL

**Anthem Recessed Mech TH Valve - 2OT**



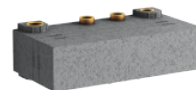
26340X-NA



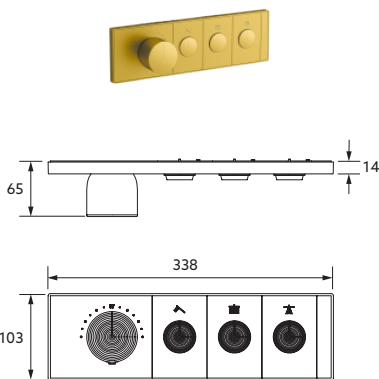
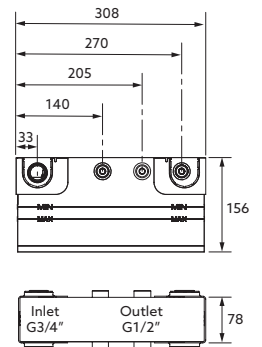
**Anthem Recessed Mech TH Control - 3OT**

Polish Chrome - 26347T-9-CP  
 Brushed Nickel - 26347T-9-BN  
 Brushed Brass - 26347T-9-2MB  
 Matte Black - 26347T-9-BL

**Anthem Recessed Mech TH Valve - 3OT**

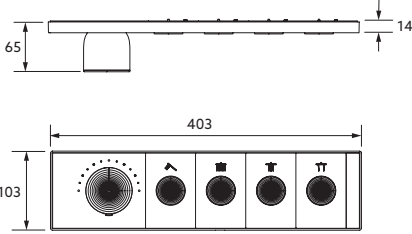
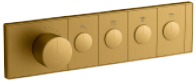


26341X-NA



**Anthem Recessed Mech TH Control - 4OT**

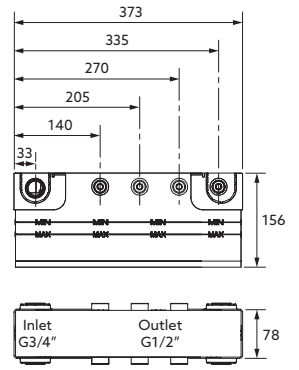
Polish Chrome - 26348T-9-CP  
 Brushed Nickel - 26348T-9-BN  
 Brushed Brass - 26348T-9-2MB  
 Matte Black - 26348T-9-BL



**Anthem Recessed Mech TH Valve - 4OT**

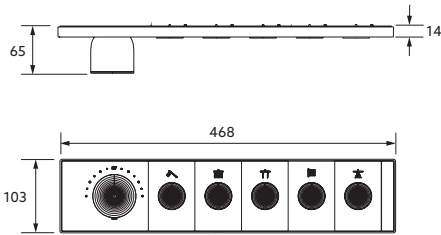
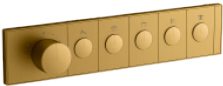


26342X-NA

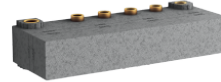


**Anthem Recessed Mech TH Control - 5OT**

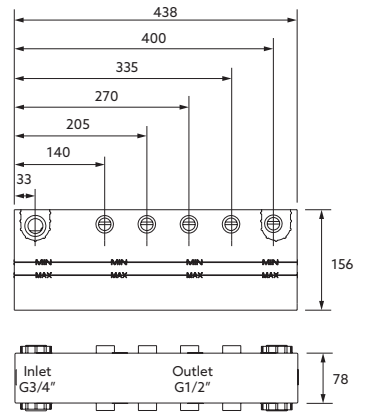
Polish Chrome - 26349T-9-CP  
 Brushed Nickel - 26349T-9-BN  
 Brushed Brass - 26349T-9-2MB  
 Matte Black - 26349T-9-BL



**Anthem Recessed Mech TH Valve - 5OT**

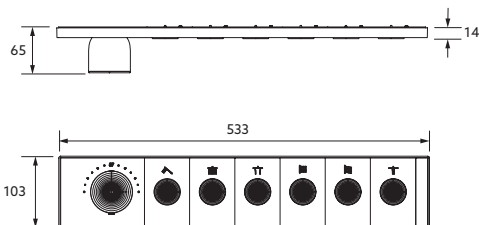
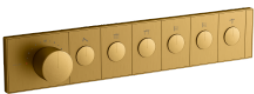


26343X-NA



**Anthem Recessed Mech TH Control - 6OT**

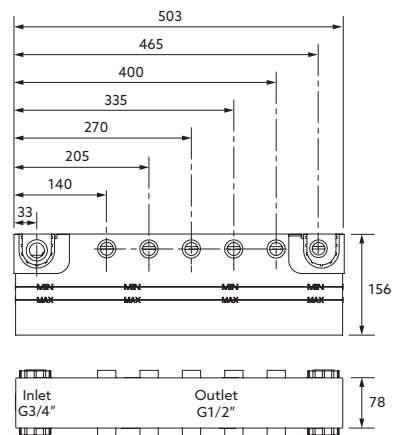
Polish Chrome - 26350T-9-CP  
 Brushed Nickel - 26350T-9-BN  
 Brushed Brass - 26350T-9-2MB  
 Matte Black - 26350T-9-BL



**Anthem Recessed Mech TH Valve - 6OT**



26344X-NA



**Installation notes:**

1. All dimensions are in millimeters.
2. Optimum working pressure 300 ~ 500 kPa.
3. Inline filters should be used to protect tapware from debris that may be present within the plumbing.
4. All installations should comply with local plumbing codes and the relevant requirements of AS/NZS3500.