

BEFORE YOU BEGIN

Thank you for choosing the Bold Look of Kohler. Kohler craftsmanship offers you a rare combination of proven performance and graceful sophistication that will satisfy you for years to come. The quality and dependability of your Kohler toilet seat will surpass your highest expectations. We're very proud of our products here at Kohler and we know you will be too.

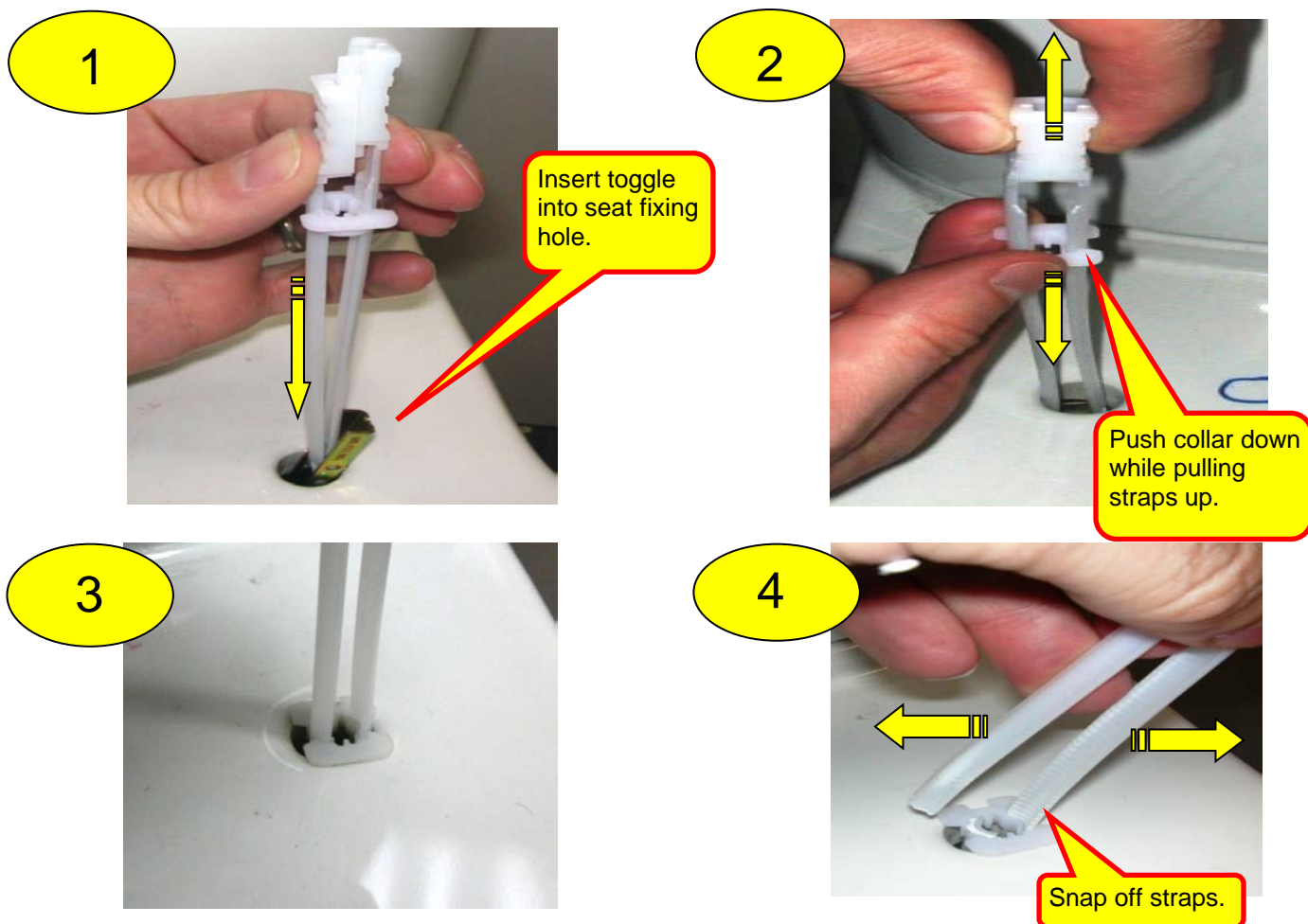
Please take a few minutes to study this manual. Pay special attention to the Care and Cleaning instructions. All information in this manual is based upon the latest product information available at the time of publication. At Kohler we constantly strive to improve the quality of our products. We reserve the right to make changes in product characteristics, packaging or availability at any time without notice.

Care and Cleaning of Seats: Use warm soapy water only on toilet seats. Do not use abrasive cleaners or chemicals. This can damage the surface of the seat.

SEAT INSTALLATION

Most Kohler toilet seats come supplied with plastic toggles which allow the quickest and most reliable installation. To install seats with toggles, follow seat installation method A. Some toilet pans will not allow the use of toggles as the fixing holes do not go completely through the toilet pan. For these toilet pans follow seat installation method B.

SEAT TO PAN INSTALLATION METHOD A - (toggles)



5



6



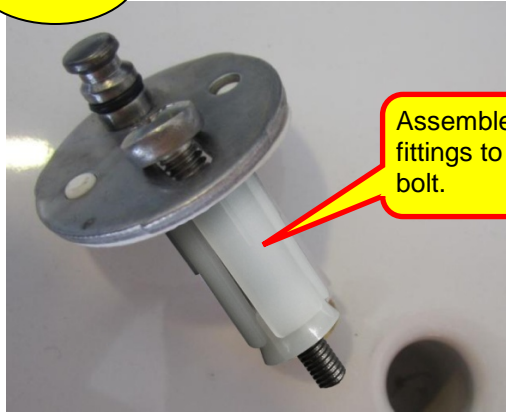
Bolt hinge plate to plastic toggle collar.

SEAT TO PAN INSTALLATION METHOD B - (no toggles)

1



2



Assemble plastic fittings to end of bolt.

3

Insert into seat fixing hole.



4

Continue with seat installation.

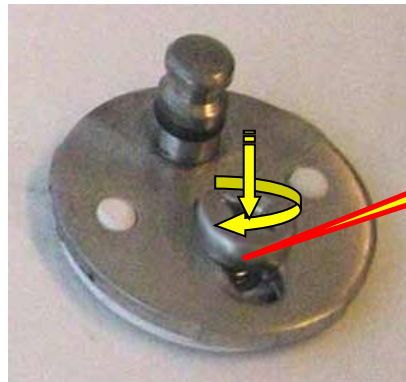


SEAT INSTALLATION FOR METHODS A AND B

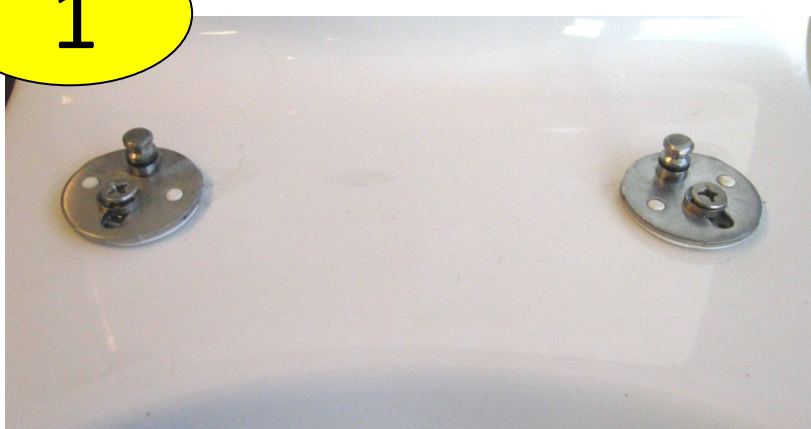
Do not fully tighten.



Do not fully tighten.



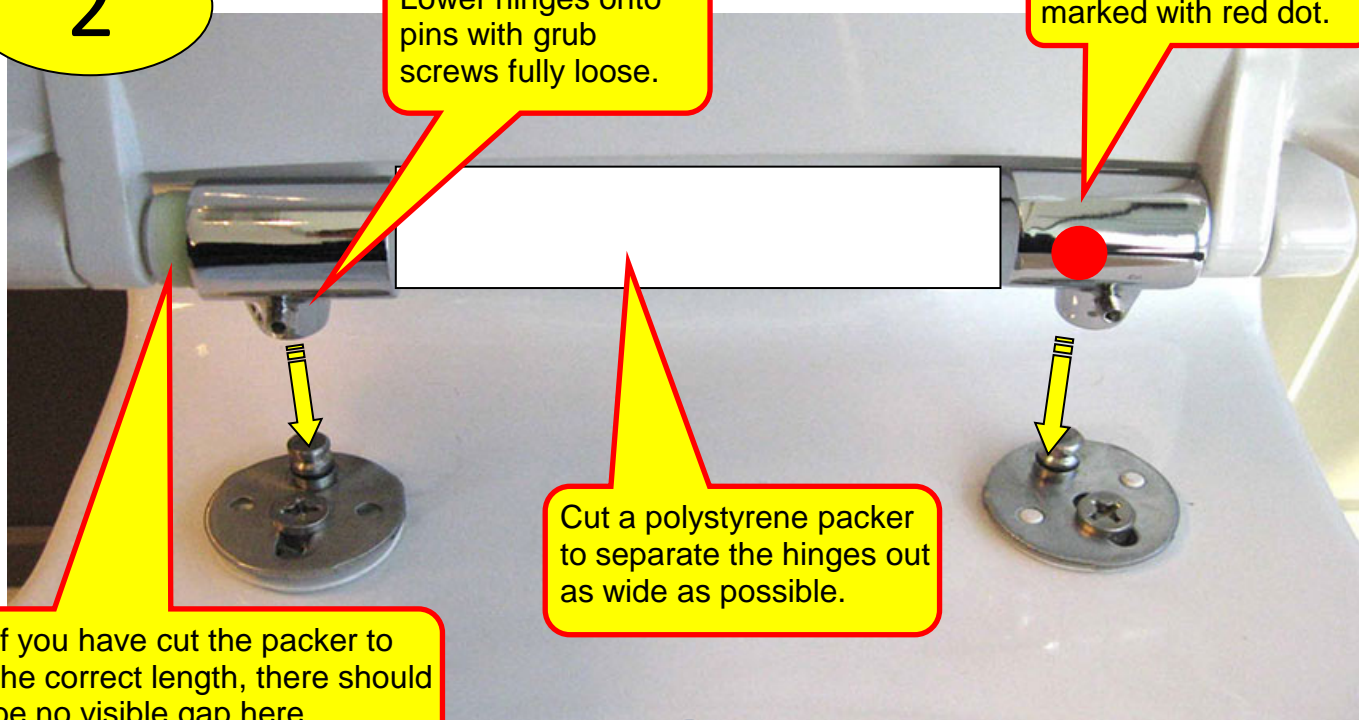
1



2

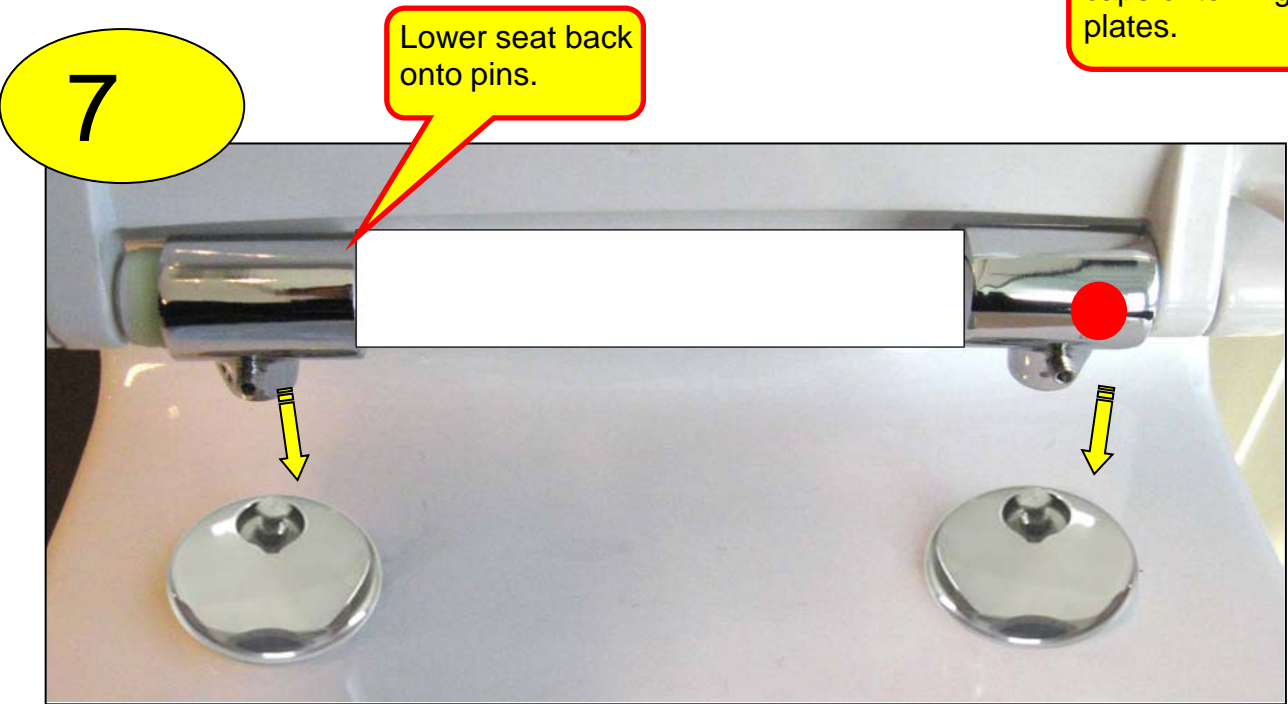
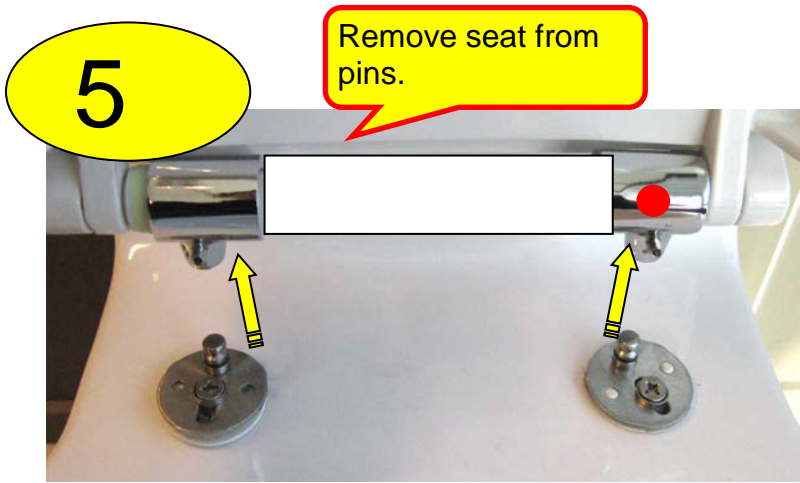
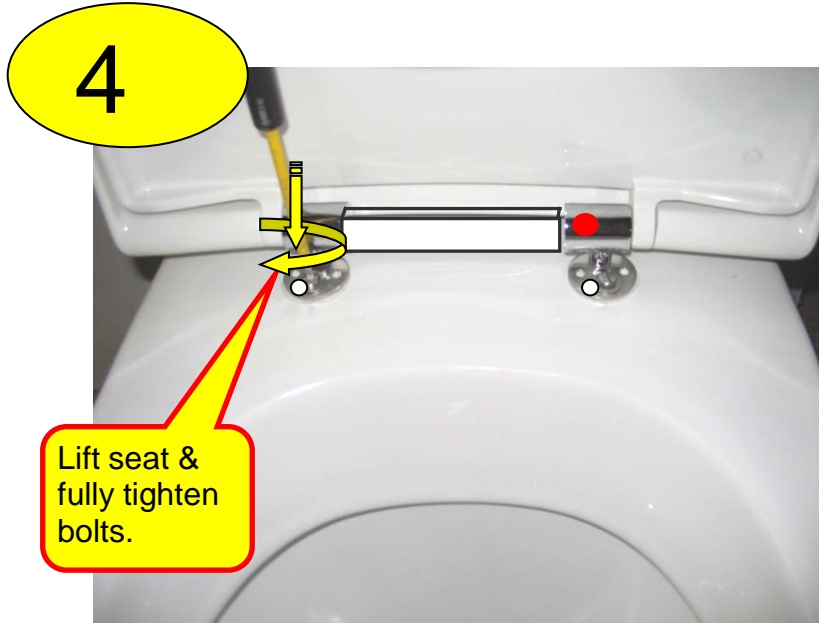
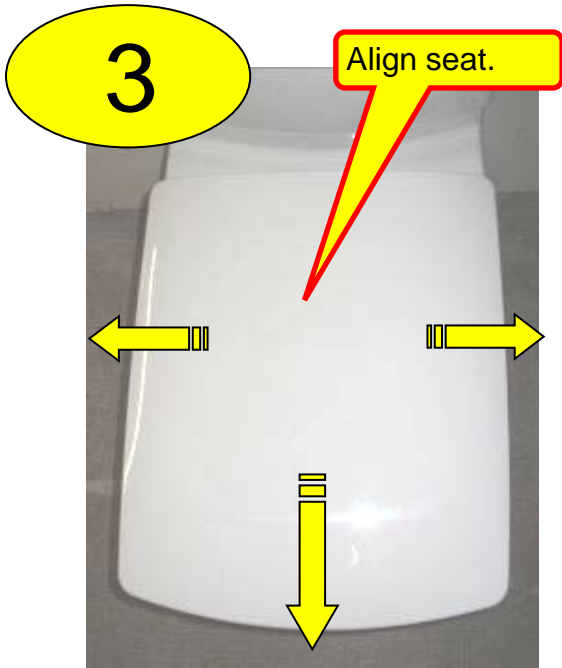
Lower hinges onto pins with grub screws fully loose.

Right hand hinge marked with red dot.



Cut a polystyrene packer to separate the hinges out as wide as possible.

If you have cut the packer to the correct length, there should be no visible gap here.



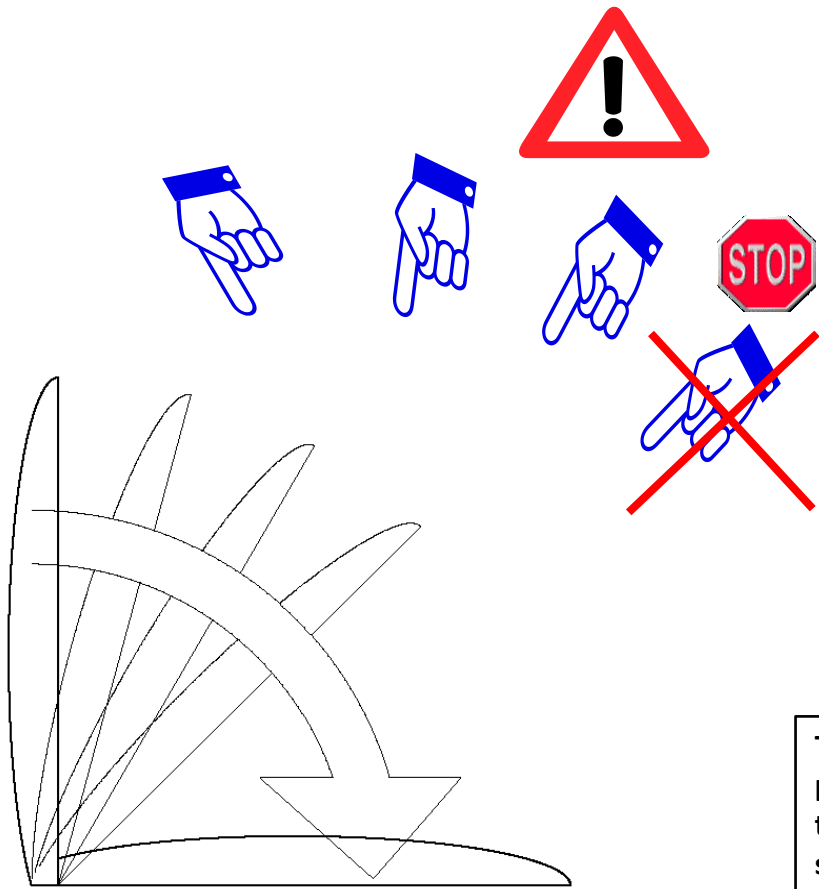
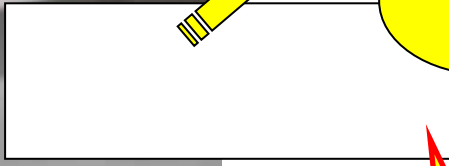
8

Tighten both grub screws to lock seat in place .



9

Remove polystyrene block.



To close soft close seat partially close the seat, then release it. Seat will softly fall until closed.